

# Crab Shack

BY TWO CAN ART



Crab Trap Quilt designed by:  
**Two Can Art**

Quilt Size: 43" x 43¼"

[andoverfabrics.com](http://andoverfabrics.com)



## About Crab Shack

I absolutely love the whole coastal theme and especially the creatures of the sea. I am so intrigued with the varied beauty of life beneath the water. I think my son Noah's textures work wonderfully to bring them to life in the images we do. He has a beautiful blue texture that inspired the idea of the blue crab and that of course led to doing a red one too. – Patti Gay of Two Can Art

andover

makower uk  
*The Henley Studio*

Free Pattern Download Available

1384 Broadway New York, NY 10018  
Tel. (800) 223-5678 • [andoverfabrics.com](http://andoverfabrics.com)

# Crab Trap Quilt



Introducing Andover Fabrics new collection: **CRAB SHACK** by Two Can Art

Quilt designed by Two Can Art

Quilt finishes 43" x 43¼"

5 Block Y: 4" x 3"

4 Block Z: 4" x 6"

*Sea and sand and bright blue skies are the focus of this delectable wall quilt. Choose either a blue crab or a red crab panel to be the centerpiece. A novelty "newsprint" fabric adds to the fun.*

## Fabric Requirements

		Yardage	Fabric
<b>Fabric A</b>	center	1 panel (⅔ yard)	8300-C
<b>Fabric B</b>	setting	½ yard	8301-C
<b>Fabric C</b>	border	⅜ yard	8318-C
<b>Fabric D</b>	setting	⅛ yard	1362-1
<b>Fabric E</b>	border, blocks	½ yard	1363-Y
<b>Fabric F</b>	setting	1½ yards	1365-B7
<b>Fabric G</b>	border	⅛ yard	1365-Y
<b>Fabric H</b>	border, blocks	½ yard	1367-B2
<b>Fabric I</b>	binding	⅜ yard	TP-920-B9
<b>Fabric J</b>	border, sash	⅜ yard	TP-920-R6
<b>Backing</b>		3 yards	1360-S

**Fabric E** Cut (1) sash 2¼" x 20½", cut crosswise  
Cut (10) squares 2½" x 2½"  
Cut (12) Template 3  
Cut (4) Template 2  
Cut (4) Template 2 reversed

**Fabric F** Cut (4) borders 1¼" x 43½", cut crosswise (see Step 1)  
Cut (2) inner side borders 1¼" x 20½", cut lengthwise (see Step 1)  
Cut (1) inner top border 1¼" x 22", cut crosswise  
Cut (1) inner bottom border 1½" x 22", cut crosswise  
Cut (4) Template 1, cut crosswise  
Cut (4) rectangles 3¼" x 2½"  
Cut (10) rectangles 2½" x 3½"  
Cut (4) rectangles 2½" x 6½"  
Cut (4) rectangles 1½" x 6½"  
Cut (2) rectangles 1¼" x 5¼"  
Cut (4) rectangles 1¼" x 3½"  
Cut (2) rectangles 1" x 6½"  
Cut (10) squares 3¼" x 3¼"

**Fabric G** Cut (2) rectangles 2¼" x 6½"

**Fabric H** Cut (20) Template 3  
Cut (2) Template 4  
Cut (2) Template 4 reversed  
Cut (10) squares 2½" x 2½"  
Cut (4) rectangles 2" x 3½"

**Fabric I** Cut (5) strips 2½" x WOF for binding

**Fabric J** Cut (2) top/bottom borders 1½" x 38", cut crosswise  
Cut (4) side borders 1½" x 32¾", cut crosswise  
Cut (1) inner top border 1½" x 22"  
Cut (2) sashes 1½" x 5¼"

**Backing** Cut (2) panels 26" x 51", pieced to fit quilt top with overlap on all sides

## Cutting Directions

**Note:** Read assembly directions before cutting patches. All measurements are cut sizes and include ¼" seam allowances. Borders are cut the exact lengths required plus ¼" seam allowances. WOF designates the width of fabric from selvedge to selvedge (approximately 42" wide).

**Fabric A** Fussy-cut (1) panel 20½" x 20½"  
(choose either the blue or red crab)

**Fabric B** Fussy-cut (2) rectangles 6½" x 10½"  
(10½" side is parallel to selvedge)  
Fussy-cut (3) rectangles 7" x 5¼"  
(5¼" side is parallel to selvedge)

**Fabric C** Cut (10) Template 3  
Cut (12) squares 3¼" x 3¼"  
Cut (4) rectangles 1½" x 6½"

**Fabric D** Cut (4) rectangles 2½" x 6½"

# Crab Trap Quilt

## Making the Quilt

- Note that all Fabric F patches are cut so the wavy grain of the print runs crosswise to the quilt. When cutting Fabric F borders and patches, refer to the quilt photograph to be certain that the wave print will be as you want it.
- The Block Ys are made with a stitch-and-flip method. Draw a diagonal line on the wrong side of each Fabric E and Fabric H  $2\frac{1}{2}$ " square. Referring to Diagram 1, place a marked Fabric E square on a Fabric F  $2\frac{1}{2}$ " x  $3\frac{1}{2}$ " rectangle, right sides together, aligning raw edges at one end as shown. Stitch on the drawn line; trim away and discard excess fabric. Press open. Position a Fabric H marked square on the opposite end (Diagram 2), watching orientation of the marked line. Stitch on the drawn line; trim away and discard excess fabric. From the back side, press the seam allowances toward the cloud fabric. Make 5 units like this.
- Referring to Diagram 3, place a marked Fabric E square on a Fabric F  $2\frac{1}{2}$ " x  $3\frac{1}{2}$ " rectangle, but position the drawn line at the opposite angle as shown. Stitch on the drawn line; trim away and discard excess fabric. Press open. Position a Fabric H marked square on the opposite end (Diagram 4), watching orientation of the marked line. Stitch on the drawn line; trim away and discard excess fabric. From the back side, press the seam allowances toward the tan fabric. Make 5 units like this.

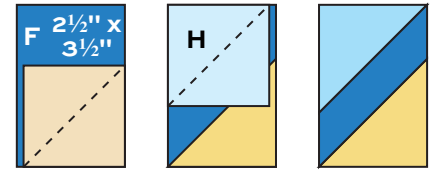


Diagram 1

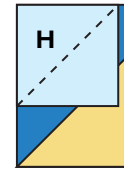
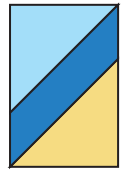


Diagram 2



Make 5

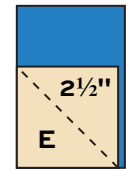


Diagram 3

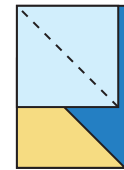
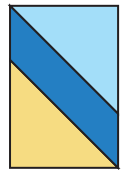
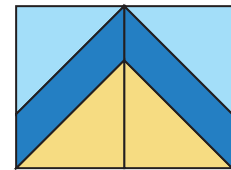


Diagram 4



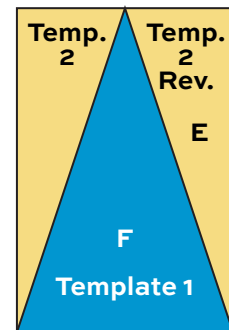
Make 5



Block Y - Make 5

Join a unit from Step 3 and a unit from Step 4 to make a Block Y. Note that the seam allowances nestle into each other. Press the final seam allowance open to distribute the bulk evenly. Make 5 Block Y. Set aside for Step 7.

- Referring to the Block Z diagram, sew a Fabric E Template 2 to one side of the Fabric F Template 1. Sew a reversed Template 2 to the other side. The block should be  $4\frac{1}{2}$ " x  $6\frac{1}{2}$ ". Make 4 Block Z. Set aside for Step 8.
- Refer to the Quilt Diagram for the remaining steps. Sew the appropriate Fabric F borders to the sides, and then to the top and bottom of the center A panel. (Note that the bottom border is wider than the other 3.) Sew a Fabric J  $22$ " border to the top of the quilt.
- Join 3 Fabric B rectangles with 2 Fabric J strips to make a pieced border. Sew to the top of the quilt.
- Join 5 Fabric Y blocks side by side to make a zigzag border. Sew the Fabric E sash to the bottom of the zigzag border. Sew Fabric F  $5\frac{1}{4}$ " strips to the sides. Sew to the bottom of the quilt.
- Join the various patches and 2 Z Blocks to make the left side pieced border. Rotate the B rectangle so the crab print remains upright in the quilt. Be sure to rotate the Block Zs correctly. Join the patches and blocks. Repeat these steps to make the right side pieced border. Hint: This border is exactly like the left side border, but it's turned upside down. Be sure to keep the crab print in the upright position. Sew  $32\frac{3}{4}$ " red borders to each side of the pieced borders. Sew to the quilt. Finally, sew the  $38$ " red borders to the top and bottom of the quilt.
- Join 6 Fabric C squares and 5 Fabric F squares to make the outer side border. Sew Fabric F rectangles to the top and bottom. Repeat. Sew to the sides of the quilt.
- To make the top and bottom outer borders, join Fabrics E, H, and C Template 3 patches in the order shown. Sew Fabric H Template 4 and 4 reversed patches to the ends, and then join Fabric F and H rectangles to the ends as shown. Finally, sew Fabric F  $43\frac{1}{2}$ " strips to the pieced borders. Make 2 borders alike. Sew to the top and bottom, noting the orientation of the patches.

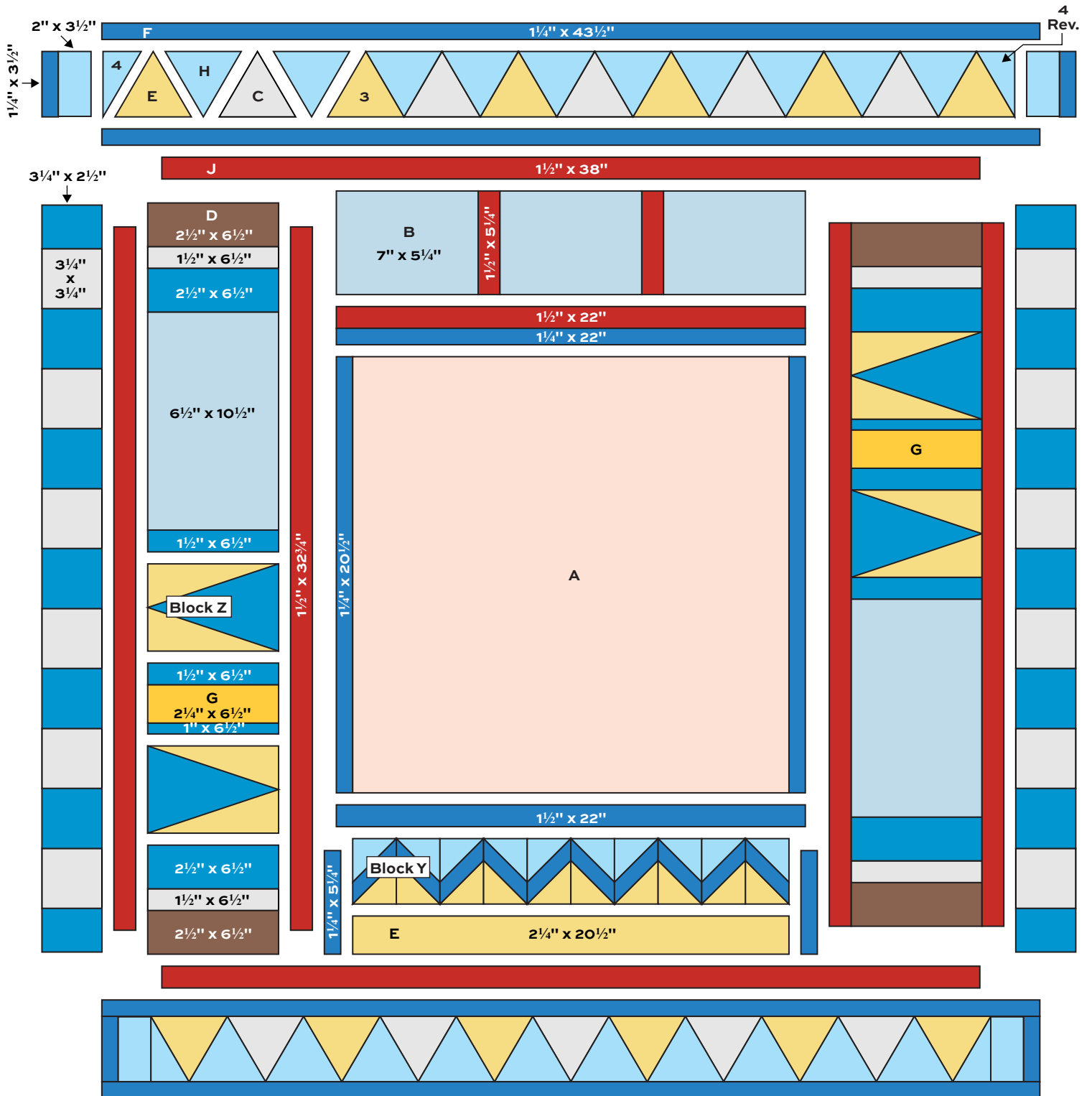


Block Z - Make 4

## Finishing the Quilt

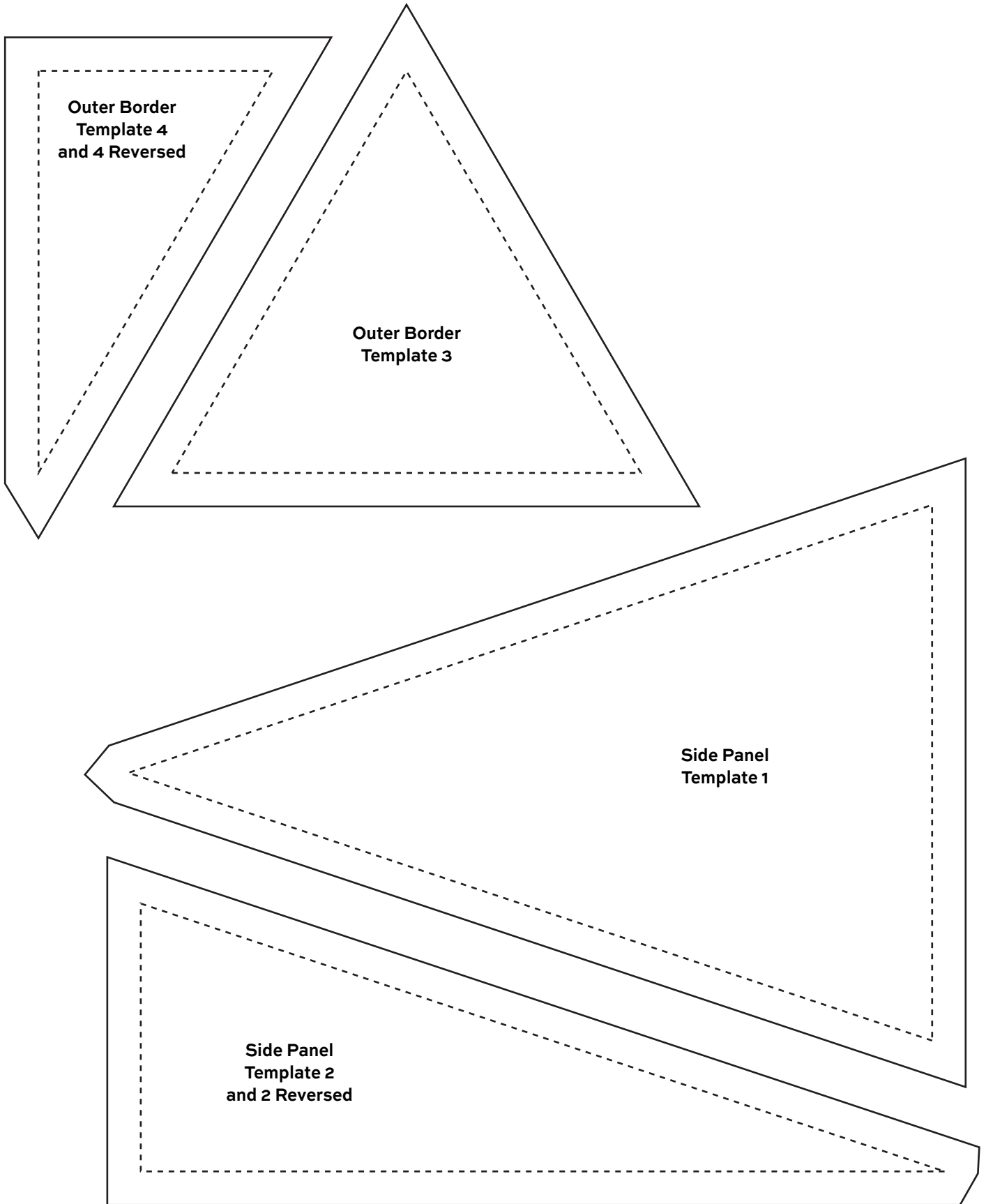
- Layer the quilt with batting and backing and baste. Quilt in the ditch around borders and block patches. Quilt around the printed motifs in the center panel and Fabric B patches. Bind to finish the quilt.

# Crab Trap Quilt



# Crab Trap Quilt

---



# Crab Shack

BY TWO CAN ART



8300-C



8301-C



8318-C



1367-B2



1360-S



1365-B7



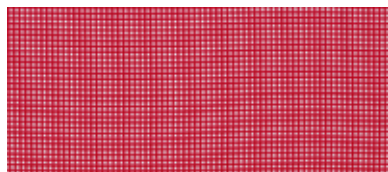
1365-Y



1363-Y



TP-920-B9



TP-920-R6



1362-1

All fabrics are used in quilt pattern.  
Fabrics shown are 15% of actual size.

andover

• makower uk  
• The Henley Studio

Free Pattern Download Available

1384 Broadway New York, NY 10018  
Tel. (800) 223-5678 • andoverfabrics.com